

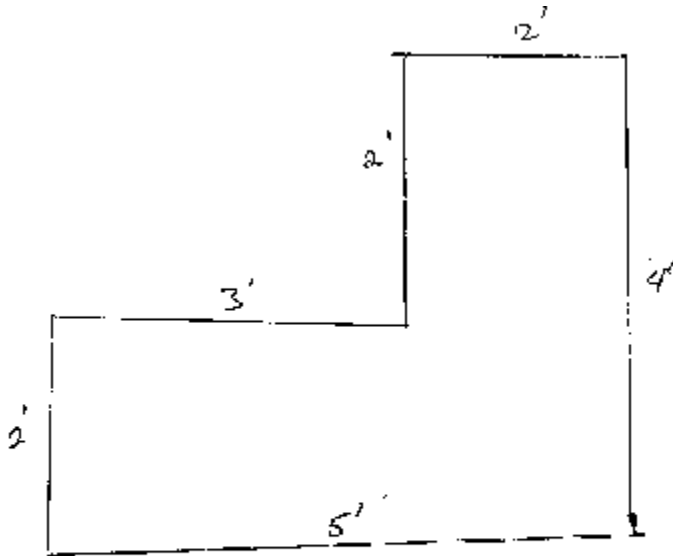
ALLEN DATAGRAPH

Technical Support Bulletin: Entering a Hand Drawing Countertop

Last Updated August 15, 2005

Abstract: This TSB shows a step-by-step procedure to enter a hand drawn countertop into AllenCAD. Tile the countertop and send it to the cutter.

Here is a hand drawn countertop to use in this example:

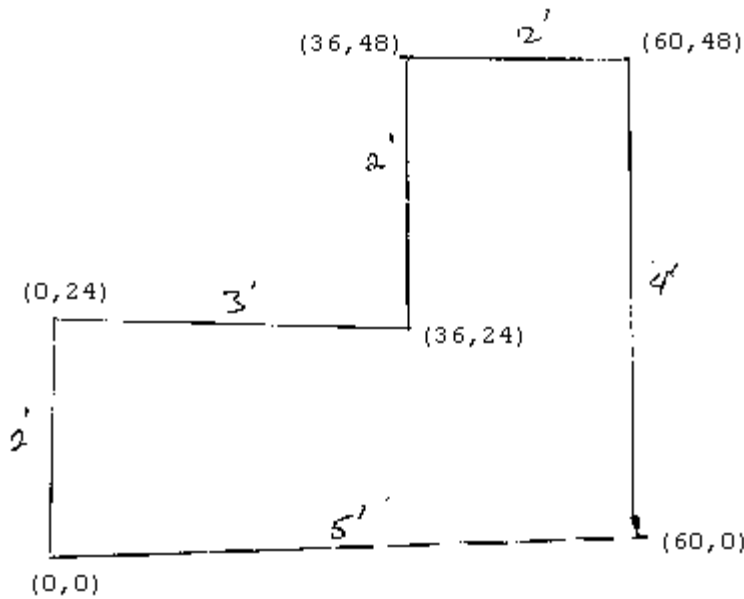


Hand Drawn
Countertop
Template
Scale 1" = 1'

First convert all distances to inches.

Next pick a corner for the origin.

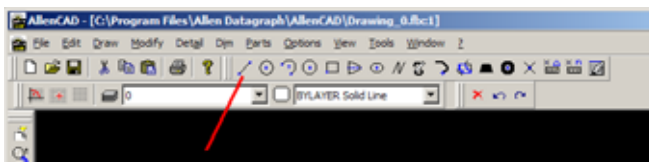
Then convert the end points to coordinates on an x/y grid.



Hand Drawn
Counter Top
Template
Scale 1" = 1'

Start AllenCad and pick a new page, choose feet and inches and click on OK. Click on options -> settings. On the Object Snap page click on the Off button to remove all object snap check boxes below. On the Snap/Grid page, uncheck Orthogonal Mode Active. Click on OK.


Click on the Line icon on the draw toolbar.



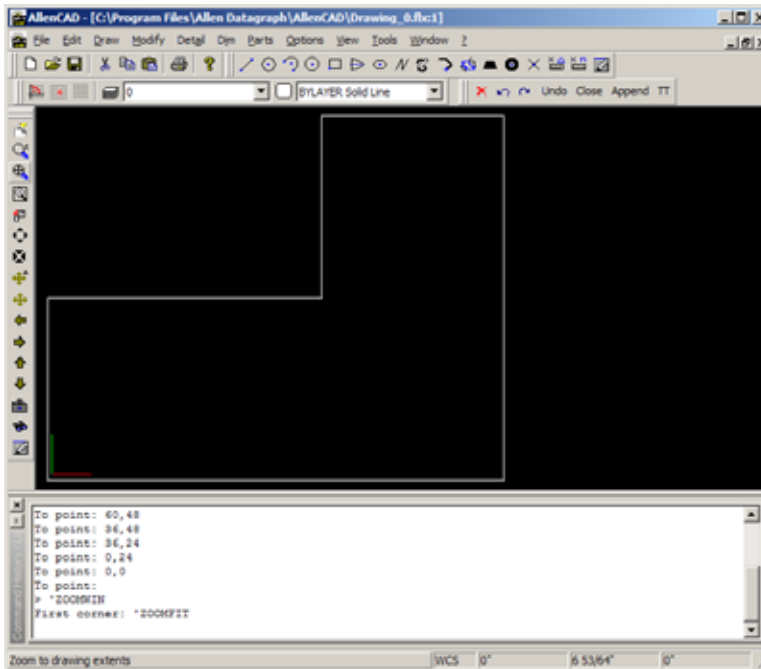
Now, type in the coordinates from the 2nd drawing following the end points in a counterclockwise direction. You are prompted for each end point as you type them. After each coordinate pair press the enter key on the keyboard. The command history window will look like below when you are complete.

```
> LINE
From point: 0,0
To point: 60,0
To point: 60,48
To point: 36,48
To point: 36,24
To point: 0,24
To point: 0,0
To point:
```

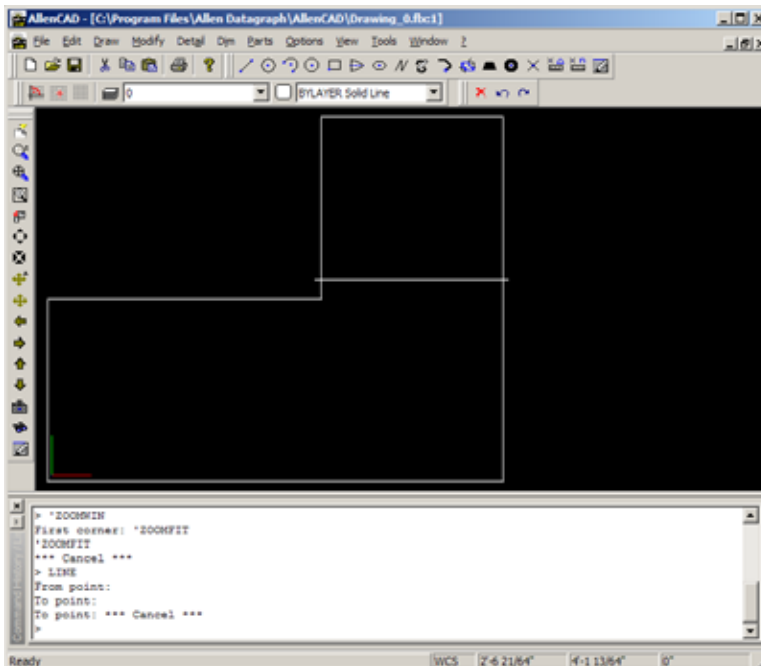



To display the whole image click on the zoom to drawing extents icon  on the zoom toolbar.

Your screen should now look like this:



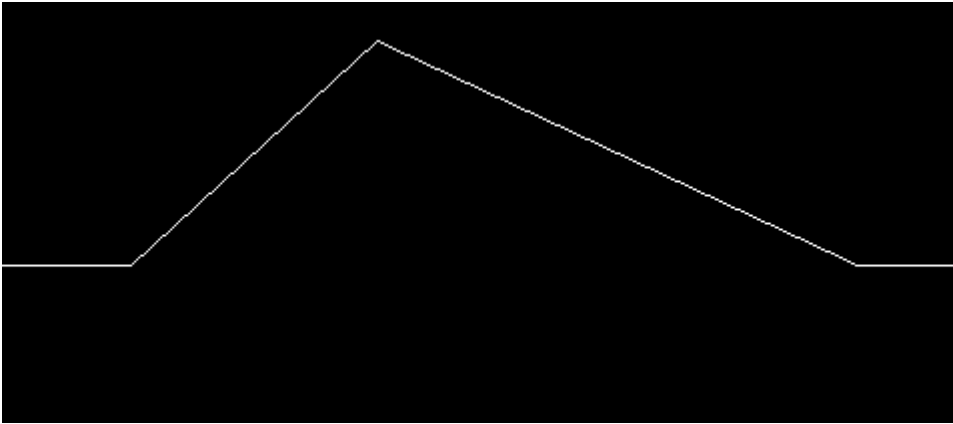
This drawing will not fit on our i30 template maker without tiling so we need to add a break line at between 26 and 27 inches. The break line can be positioned using the line tool. Draw a horizontal line across the top leg of the counter top extending beyond the edge of the vertical portion.



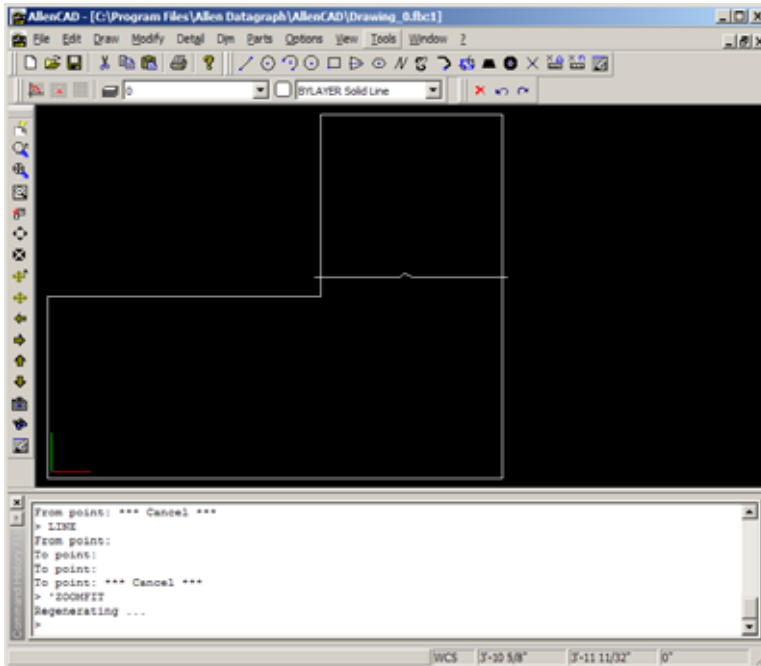
You might want to add a key in the cut line so it is easy to join the parts together. Use the  zoom window tool and draw a rectangle around the cut line. Then click on modify break and click two end points for our key.





Zoom window again to the break and draw the key using the line tool.

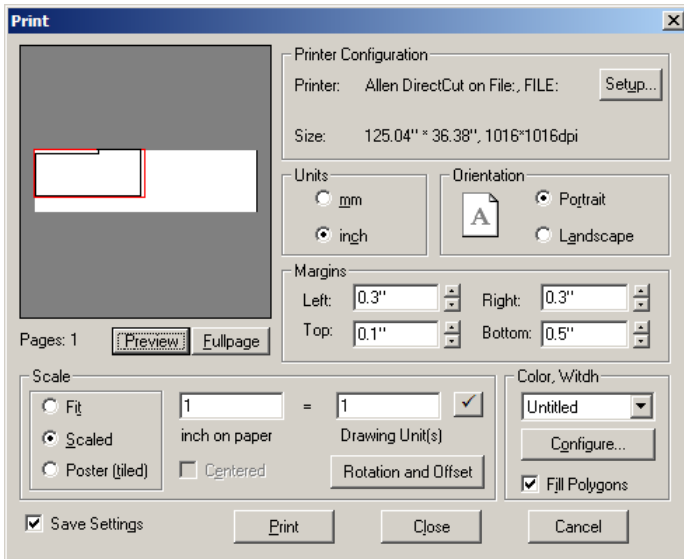


Zoom extents again and your countertop is ready to cut.



Cutting is done in two pieces. First we will cut the lower part. Click on the printer tool  on the standard toolbar. Choose window  from the options toolbar. The cursor changes to a cross hair. Draw a rectangle around the lower half of the countertop.





If the printer selected in the printer configuration is not the DirectCut driver, select the Allen DirectCut Driver, and a suitable page size, Set units = inch, scale = scaled 1 inch on paper = 1 drawing unit.

Clicking print will send the first half of the job to the cutter.

Next repeat the steps and draw a window around the top half the of countertop and click on print again. You may want to click on the Rotation and Offset button in the above box and rotate the vertical part of the countertop to avoid a 3rd tile. It is not necessary for this job.